

# Ginter Park

The Queen Of Suburbs Yesterday, Today, & Tomorrow

Ginter Park Residents Association News



## Dates to Remember...

### Board Meeting

Tuesday, November 9  
7:30 p.m.

St. Thomas' Church  
Hawthorne & Walton

### Chamberlayne Clean-Up

Saturday, November 13  
10 a.m.

Sw corner Azalea &  
Chamberlayne

### Annual Meeting & Dinner

Tuesday, November 16  
6:30 p.m.

St. Thomas' Church  
Hawthorne & Walton

## Annual Meeting & Dinner

Mark Tuesday, November 16 on your calendar for the GPRA Annual Business Meeting and dinner. This will wrap up the 2010 business year (although there is still the Holiday Party) with good food, good conversation, and updates on Ginter Park issues.

We'll hear highlights of 2010 and plans for 2011. Officers for 2011 will be elected. And Tim Holtz will take us back a year with a video of our memorable 100th. anniversary celebration of the GPRA.

As usual, the evening will begin with a delicious dinner at 6:30 with an entrée provided by Meredith Strange-Boston or her mother, a master of meats. You should just bring a salad, side dish or dessert. We also expect to have childcare.

## 36 ARTISTS SHOW

### OPEN STUDIOS IN LABURNUM PARK

Northside Artists will hold their annual Open Studio tour featuring the work of 36 artists on Saturday, November 20 from 10-4 and Sunday, November 21 from 12-4.

Five locations will be open: the homes at 1519, 1514 and 1501 Westwood and 3313 Suffolk. The lobby of Ginter Place, 1350 Westwood, where one of the artists lives, will also have a display of artwork.

Among the many creations for sale are pit fired ceramics, paintings, wooden bowls, wooden furniture, sculptures, hand woven items, jewelry, children's sweaters, felted hats, handbags, calendars, travel items, collages, and handmade chocolate confections.

## Leaf Collection



Public Works has announced that leaf collection for Ginter Park will begin December 20 and go through Dec. 31. However, rain or snow could change the dates. For the most accurate updates, call the Leaf Hot Line at 646-LEAF(5323). If you are in a hurry, you can schedule a special collection for a \$75 fee.

[www.historicginterpark.org](http://www.historicginterpark.org)

1009 Overbrook Rd. Richmond, VA 23220

Mon-Fri 9:00-4:30

Visit Our Monthly Sale - Call For Details

# Paul's Place

ANTIQUE LIGHTING & FURNITURE

FULL RESTORATION STUDIO

ARCHITECTURAL RECLAMATION

UNIQUE ~ LIVING ~ HISTORY

## SANTA SHOPS HERE!

Bring in this ad for 15% off any lighting purchase and 10% off anything in the store

expires 12/23/10



## ANNUAL FALL OPEN HOUSE

Sunday, November 14 / 2:00 - 4:00 pm



**Luther Memorial School**  
Making the grade since 1856

[www.luthermemorial.com](http://www.luthermemorial.com)

1301 Robin Hood Road • 321-6420

Luther welcomes qualified applicants of any race, religion, or ethnic origin.



your local source for unique gifts and decor



5105 Lakeside Avenue • 804.622.7770

Tuesday-Saturday 10-6 • Sunday 12-4

[www.embellish-yourhome.com](http://www.embellish-yourhome.com)

# GPRA

This newsletter is produced by:  
Ginter Park Residents Association  
P.O. Box 25374  
Richmond, Virginia 23260-5374

Published monthly except January and August

### President

Meg Lawrence 266-2794

### Vice President

Rebecca Dodson 213-0325

### Secretary

Gail Kangas 321-1837

### Treasurer

Carolyn Winks 228-3525

### Past President

Tim Holtz 321-7642

### Program Committee

Wendy Kleinfeld 321-0800

### Public Safety Committee

Dick Stone 329-6924

### Financial Chair

Rick Fox 358-1053

### Membership

Karen Beasley 303-6770

### Planning & Zoning

Dennis Garza 516-9388

### Car Patrol

Jason Helmlinger 358-0188

### Yahoo Group

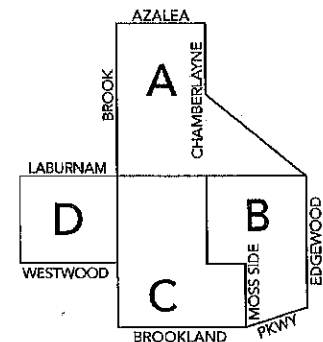
Annette Foster 274-0175

### District Representatives

- |          |                         |          |
|----------|-------------------------|----------|
| <b>A</b> | Lois Sisk               | 264-0558 |
|          | Richard Minter          | 839-4696 |
|          | Neil Ohlsson            | 266-3446 |
| <b>B</b> | Dick Stone              | 329-6924 |
|          | Annette Foster          | 274-0175 |
| <b>C</b> | Ellen Canestrano        | 228-2286 |
| <b>D</b> | Honor Carver            | 358-2690 |
|          | Meredith Strange Boston | 355-0376 |

### Member-at large

- |  |                |          |
|--|----------------|----------|
|  | Abena Oparebea | 262-0421 |
|  | John King      | 321-4421 |



### Newsletter Editor

Anne Thorn 353-9363

### Advertising

Nancy Hall (540) 969-9614  
email: [winterbird121@yahoo.com](mailto:winterbird121@yahoo.com)

Advertising and copy deadline is the second weekend of each month. Send comments, corrections and articles to:  
**Editorial Committee, P.O. Box 25374**  
Richmond, VA 23260

©Copyright GPRA 2008

# Chamberlayne Ave. Clean-up Nov.13

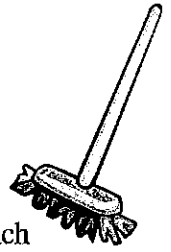
By Kristen Allegood

The Chamberlayne Avenue Initiative (CAI) of the GPRA is undertaking its first project—decreasing trash along the street.

Upon request, GRTC has added trash cans at most of the bus stops along Chamberlayne. Also, GRTC is going to start playing a public service message requesting passengers to use the trash cans located at bus stops instead of littering.

On Saturday November 13th (rain date November 20th), we will have a neighborhood clean-up of Chamberlayne. Starting at 10 am, we will meet at the SW corner of Chamberlayne Ave. and Azalea Ave. and head south. The Clean-City Commission is providing gloves, safety vests, and trash bags. Along the route, coffee and hot chocolate will

be available for volunteers. We will clean as far south on Chamberlayne as possible by noon. The Clean-City Commission will coordinate trash collection.



GPRA is generously offering a pizza lunch for clean-up volunteers following our clean-up. At noon, the clean-up will end at Ginter Park United Methodist Church, which is located at Chamberlayne Ave. and Laburnum Ave. Rides home should be arranged for 12:30 at GP United Methodist Church. Come out to clean up our community while having fun with your neighbors!

## Holiday Gala Saturday, December 11th

### ✎ Mark Your Calendars ✎

The annual Historic Ginter Park Holiday Gala will be Saturday, December 11th, from 7:30 to 11:30 pm. This year's event will take place at the Ginter Park Womens' Club, corner of Rennie and Seminary Avenues, enter on the Rennie side.

This year, we will enjoy the considerable musical talents and showmanship of the Kings of Swing Band, so be sure to wear your dancing shoes!

For those members who would like a quieter place to catch up with friends and enjoy the tempting delights provided by our neighbor, Bobby Butsavage of CATERAIDE, we will also have the house portion of the facility.

*It's black tie, cocktail dress optional,  
so plan to dress to impress!*

Single member households may bring a guest. Admission is by invitation only. If you haven't sent your dues for 2010, it's not too late to get an invitation—See the dues coupon

in this newsletter. If you're not sure if you have paid or not, please check with Karen Beasley: 303-6770, or KarenBeasley@me.com. Those members who would like to bring visiting house guests may do so; \$25 per couple.

Look for your invitation in the mail! It's going to be a great evening!



**GINTER PARK  
PRESBYTERIAN  
CHURCH**  
3601 Seminary Avenue  
389-5049  
**WORSHIP**  
11:00 a.m.  
Nursery available  
**SUNDAY SCHOOL**  
9:30 a.m.  
Adults, Youth, & Children

*Visit us online at [www.ginterparkpc.org](http://www.ginterparkpc.org)*

**garden eScapes**  
a lawn, garden and landscape service

Kelly Kinsey                      telephone - 358-1822  
Jumby@comcast.net              cell - 310-0933

Electrical	Heating Oil
Plumbing	Gas Furnaces
Cooling	Oil Furnaces
Heating	Heat Pumps

**KELLEHER**  
Since 1968

Joseph M. Kelleher Jr.  
1301 School Street  
Richmond, VA 23220

Office (804) 649-7501  
Direct (804) 643-2206  
Fax (804) 788-0848  
[jmkelleher@kelleherhvac.com](mailto:jmkelleher@kelleherhvac.com)

# Soiree a SCINTILLATING Success

By Stephanie M. Berv

What a magical autumn evening it was, when over sixty Ginter Park residents participated in their first progressive dinner. As we mingled and chatted, we started the event sampling scrumptious appetizers, coordinated by Sheila Weisensale at the lovely historic mansion of Rebecca and Kevin Dodson. Guests were treated to wild mushroom, garlic & thyme tartlets, smoked oyster spread, cucumber hummus bites and Spanish smoked pimento pecans, just to name a few— all provided by Michele Humlan, Debbie Welch and Annette Foster. Our attentive servers, Anne & Cory Chamberlain, Stephen Weisensale and David Berv graciously poured beer and wine, from Once Upon a Vine.

We then disbursed into smaller groups, to the lovely homes of Kaye and Jeff Whorley, Cathy and Ron Yohai, Mary Frances and Tom Hobbs, Christina and Forrest Shelor, Mary Elfner and Geoff Wilson. Wondrous salads such as raspberry, avocado and pear gorgonzola, and mixed greens with exotic combinations of gorgonzola, prosciutto, pumpkin seeds, mandarin oranges, walnut, feta, and cranberries were enticing.

After salad hour and getting to know our neighbors a little better, we found ourselves at another Ginter Park residence to dine with a new set of neighbors. We enjoyed stimulating conversations, many laughs, and comaraderie. Again we were spoiled by the many talented hosts and hostesses with entrees of veal osso bucco, boeuf bourguignon, Cornish hens with cornbread stuffing and caramelized root vegetables, and grilled beef tenderloin with port demi glace—all in the privacy of the homes of Rick Fox and Owen Sharman, Violet and Bill Dixon, Susan Wills, Carolyn Winks, Gail and Jack Kangas, Melissa Zera and Jessica Shade, and Fidelma and Peter Rigby. What a treat!




The end and the beginning —  
Hostesses Vicky Wells and Rebecca Dodson

At last, everyone gathered together again in the grand home of Vicky and Richard Wells for a variety of delectable desserts of lemon squares, chocolate almond toffee, and Oreo truffles. These were coordinated by the hosts and baked by Michele Humlan, Mandy Szkotak, Honor and Anna Carver and Sherry & Bill Peterson.

The piece de resistance was when Rebecca Wright-Dodson sabre-corked a bottle of champagne on the veranda to toast an incredible evening.

What delicious meals we ate, wonderful conversations we had, beautiful homes we got to see, and great new relationships we made with our Ginter Park neighbors. Truly a memorable evening and the beginning of a new Ginter Park tradition. Here is to all that made this first event a true success. A special thanks to Debbie Welch as co-chair, Tim Holtz for introducing the idea, and to the GPR board for letting me pursue my crazy vision.

	<b>GINTER PARK HISTORIC PLAQUES</b>
	<b>\$75.00</b> Download an order form at <a href="http://www.historicginterpark.org">www.historicginterpark.org</a> or contact Vicky Wells E-mail: <a href="mailto:pdfrog1@verizon.net">pdfrog1@verizon.net</a> Phone: 266-0234

	<b>LABURNUM PARK HISTORIC PLAQUES</b>
	<b>\$75</b> Download an order form at <a href="http://www.historicginterpark.org">www.historicginterpark.org</a> or contact Louie Pettinato E-mail: <a href="mailto:psquared1506@mac.com">psquared1506@mac.com</a> Phone: 355-3457

# Officers Nominated for 2011

(Ed. Note: When people serve on the GPRA Board for several years, your editor tends to re-work the same dry descriptions for this article. This year we asked the 2011 nominees to write their own biographies to be more accurate and perhaps revealing.)

The following have agreed to be nominated to GPRA positions as officers or District Representatives. Nominations will also be taken from the floor at the Nov.16 general meeting.

As of press time several vacancies existed. If you are interested in serving, contact Tim Holtz at 321-7642 or PastPresident@historicginterpark.org.

## Nominees for 2011 include:

### PRESIDENT

#### Rebecca Wright Dodson

Progressive Dinner guests started off the evening at the showplace home of Rebecca and Kevin Dodson, which has also been open for house tours over the years. Both Dodsons are in the information technology field. Rounding out the family are sons Charleston and Garrett.

In the 7 years she has been in Ginter Park, Rebecca has served the GPRA as vice president, secretary, district rep, and has chaired the Special Initiatives beginning this past year.

### VICE PRESIDENT

(vacant at press time)

### SECRETARY

#### Joy Voss

Joy has only lived in Ginter Park a little over a year—before that Durham, Chicago and St. Louis. Though currently at home with sons William, nearly 5, and Henry, 7 months, she plans to return to work as a Personal Trainer this spring.

Husband David is Pastor at Nazareth Lutheran Church in Hopewell and also CISCO CCIE Network Engineer. The family is mourning the recent loss of their 16-year-old cat, Otis.

Joy's hobbies include running, Yoga, experiencing live music, gardening, and FOOD (cooking, eating, and reading cookbooks).

### TREASURER

#### Carolyn Levey Winks

Carolyn was "born and bred in Richmond in the over-privileged and snobby West End." She went to East Carolina, where she "majored in Business Management and keg parties." She lived on Three Chopt before moving to Ginter Park in 2006. Since then she has opened her Noble Ave. home for the House and Garden Tour and the Progressive Dinner.

Carolyn describes her occupation as "managing a bunch of crappy mini storages, commercial buildings and a shopping center in the 'Hood (Belt Blvd. and Hull St.)" With this experience she was well qualified to serve as GPRA Financial Chair before taking over the treasurer's position.

Her housemates include her three dogs (Mr. Tiny, Fritzie and Devil Dog "Maverick") and two "basically ignored kitty-cats." In her leisure time she "enjoys reading, walking, working out (okay, tolerates working out) and cooking sometimes."

*continued page 6*


Free Estimates      Certified Lead Abatement      Licensed/Insured

## Classic Painting of Virginia

★ ★      Paul Ferramosca      ★ ★  
804.363.1955


Quality      Neighborhood Company      40 Years Exp.  
10% Off to Ginter Park  
Residents with this Ad

**Carol L. Thomas**  
Associate VP - Investment Officer  
1021 East Cary Street 21st Floor  
Richmond, VA 23219  
804-782-3220



ADVISORS

Together we'll go far



Investment and Insurance Products: ► NOT FDIC Insured ► NO Bank Guarantee ► MAY Lose Value

Wells Fargo Advisors, LLC, Member SIPC, is a registered broker-dealer and a separate non-bank affiliate of Wells Fargo & Company.  
©2009 Wells Fargo Advisors, LLC. All rights reserved. 0409-1260 [74124-v1]

## **PAST PRESIDENT**

### **Meg Lawrence**

Meg describes herself as “born in Michigan, moved to Arizona when I was 15, met Dan Lawrence at the University of Arizona, moved to Richmond for Dan to go to MCV, lived in Church Hill, Alexandria, 10 years in Bellevue before 17 years in Ginter Park.”

She and family physician husband Dan have two grown sons, Michael and Robert. The household also includes Pete the cat.

Meg has been involved in GPRA for many years as head of the car patrol, the planning and zoning committee and as vice president.

She teaches part time at St. Bridget School. She loves to read, having been in the same book group for 25 years, and also enjoys gardening.

### **DISTRICT A-1**

*(Westminster to Azalea, Brook to Chamberlayne)*

#### **Lois Sisk**

Lois was “once chased down the alley by an irate prostitute! Guess we were ruining her business.” As District Rep. she and others were hounding Chamberlayne landlords to clean up their properties and rid them of drugs and prostitution. Lois has also been GPRA representative to the city’s CAPS committee, which concentrates several city agencies onto problem properties.

She grew up in Manassas “before it had any traffic lights.” She and her husband Jack moved to Richmond in 1971 and have lived in Ginter Park 27 years. Though Jack has retired, Lois continues as a Transactional/Real Estate Paralegal with McGuireWoods, specializing in multi-jurisdictional, multi-property acquisitions, mergers and financings.

Among her hobbies she lists, “Spending as much time at the beach as is humanly possible given that I still work full time. Vegetable Gardening - It’s amazing how much of your own food you can raise in a small plot. Lately growing food for the grandkids’ bearded lizards! Oh, feeding and watching birds and eating the yummy food my excellent chef husband cooks.”

### **DISTRICT A-2**

*(triangle of Chamberlayne, North and Laburnum)*

#### **Richard Minter**

The Board calls Richard “Mr. Tree Man”, the man who has doggedly waged a campaign in the last two years to plant hundreds of trees in Ginter Park. He is also a certified

Tree Steward, treasurer of the Richmond Tree Stewards, and he volunteers with the Urban Forestry Commission in maintaining the city’s street trees.

Richard has lived in Ginter Park 9 years. His wife, Victoria Virvos, is a special education teacher at a correctional facility in Powhatan.

Richard is a partner in Potts, Minter & Associates, P.C., who perform surveying and civil engineering services in Richmond and surrounding counties. He is also a part time chauffeur for James Limousine. He must like to drive, because he also delivers Meals on Wheels once a week.

His hobbies include golf, shooting pool and gardening.

### **DISTRICT A-3**

*(Westminster to Laburnum, Brook to Chamberlayne)*

#### **Neil Ohlsson**

Neil hails from Charles City County originally. He has lived in Ginter Park 17 years with wife Margaret Buchanan and daughter Emma, currently in 8th. grade at Orchard House School. “Petey (a loner and a loner) actually belongs to a neighbor but visits quite regularly.”

Neil is Project Manager and Estimator with Premier Fixtures, Inc. Margaret is an independent graphic designer and artist and has volunteered her talents to the Garden Tour programs.

Among Neil’s pastimes are bicycling, backpacking, and boating.

### **DISTRICT B-1**

*(Laburnum to Westwood, Chamberlayne to Moss Side)*

#### **Martin Erb**

Music has filled the Noble Ave. home of Martin and Hope Erb since they moved in 4 years ago. Though Martin describes his job as “Director, Product Portfolio, Pink Elephant—IT Management Consulting and Best Practices Education”, he spends many hours with his hobby of music. Hope is founder and artistic director of the Greater Richmond Children’s Choir and also gives piano and vocal lessons.

Daughter Kate is a special ed teacher, daughter Emily is working on her MFA in fabric painting, and daughter Esther is into Zap Fitness and distance running.

### **DISTRICT B-2**

*(Moss Side to Edgewood, Laburnum to Ladies Mile)*

**(vacant at press time)**

*continued next page*

## DISTRICT C-1

(Laburnum to Brookland Park Blvd., Brook to Chamberlayne)

### Jonathan Murdock-Kitt

"Norma and I have lived in Ginter Park for 33 years, 24 years on Seminary Avenue and 9 years on Moss Side Avenue. Norma is a clinical psychologist in private practice for the past 37 years. We have 4 children, Kelly, a graphic designer in her own practice, Mark, an electrical engineer for the Navy, Sabrina, a paralegal and graduate student in public administration at VCU, and Laura, a graphic designer for the Kennedy Center for the Performing Arts in DC."

"I am a trial lawyer representing people injured in car crashes and crashed marriages. I have been in law practice for 36 years, and for 29 of those years I have had my office in Ginter Park on Chamberlayne Avenue in a house that Norma and I restored."

I like to ride my bicycle and walk our dog, President, through the wonderful and beautiful streets of Ginter Park. I love taking pictures of our family and documenting our travels."

## DISTRICT C-2

(Westwood to Ladies Mile, Chamberlayne to Moss Side)  
(vacant at press time)

## DISTRICT D-1

(Laburnum to Westwood, Hermitage to Gloucester)

### Honor Carver

Honor and husband Hampton have kept an eye on the changing fortunes of their neighbor, the Richmond Memorial Hospital property, during all of the 9 years they have lived in Ginter Park.

Honor is Marketing Manager at Matrix Capital Markets Group, Inc. where she writes press releases, designs ads and brochures, and makes website updates. Hampton is president and owner of Hand Holdings, a product development company. Rounding out the family is kindergartner Emily and felines Peanut, Pooh, Blackie and Fluffy.

In Honor's spare time she enjoys exercising, gardening, tennis, cooking and spending time with the family.

## DISTRICT D-2

(Laburnum to Westwood, Gloucester to Brook)  
(vacant at press time)



### "caters the GPRA Holiday Party"



112 South Second Street  
Richmond, Virginia 23219  
Phone: (804) 643-1000  
Fax: (804) 643-0013  
Toll Free: 1-800-355-1642

Stephen A. Schick      Robert A. Butsavage

[www.cateraide.com](http://www.cateraide.com)

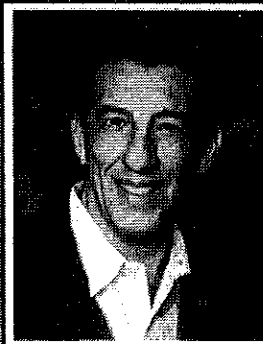


### Two Sisters Painting

Residential ❖ Commercial ❖ Faux Finishes  
503-0515

Call for a FREE Estimate Today!

<http://home.comcast.net/~twosisterspainting/>



### DENNIS GARZA REALTOR®

Strawberry Street Office  
409 Strawberry Street  
Richmond, VA 23220  
Cellular: 804-516-9388  
Office: 804-340-0840  
Toll Free: 877-553-SOLD  
Fax: 804-340-0841  
[dennis.garza@longandfoster.com](mailto:dennis.garza@longandfoster.com)



GINTER  
PLACE

*Classically modern condos in  
the heart of Ginter Park.*

Prices start in the upper \$200's  
Open Sundays 12-4 pm  
And By Appointment

[Ginterplace.com](http://Ginterplace.com)

Dee Mason  
Long & Foster Realtors  
(804) 740-3000



# J.Sarge Update

Summer's uncertainty over how J. Sargeant Reynolds Community College would integrate into Ginter Park seems settled with good feelings all around.

Malcolm Holmes of JSRCC reports that many of the 300 students are using the downtown parking deck and taking the shuttle to Brook Road. Sherwood Park and Palmyra Avenue neighbors see few if any parking problems. Police are stationed on Westwood when classes let out to oversee any impact on traffic.

Holmes also reports that students enjoy the ample green space and open atmosphere compared to the downtown location. Faculty and staff appreciate the improved technology in their new Ginter Park offices.

Mr. Maxie Cannon, Jr., the new administrator of the Ginter Park Center, is on site Monday through Friday in Room 100 of Lingle Hall. Any questions or concerns can be directed to him at 523-5756 or mcannon@reynolds.edu.



The **Ginter Park Welcome Committee** sends a HUGE Thank You to the following local merchants who have generously contributed to our new neighbor welcome baskets:

- **Nicola Flora** - 1219 Bellevue Avenue  
261-1060 – [www.nicolaflorea.com](http://www.nicolaflorea.com)
- **Row House Soaps** - 121 East Main Street  
717-7739 – [www.rowhousesoaps.com](http://www.rowhousesoaps.com)
- **Once Upon A Vine** - 4009 MacArthur Avenue  
726-9463 - [www.onceuponavine.us](http://www.onceuponavine.us)
- **Carytown Books** - 4021 MacArthur Avenue  
261-7710
- **Murphies** - 3141 W. Cary Street 359-4849

If you would like to contribute to our welcome baskets, please contact Ellen Canestrano at [canestrano@yahoo.com](mailto:canestrano@yahoo.com) or 228-2286.

Be Sure Your  
Tree Care is in  
The Right Hands.



Well cared for trees enhance the beauty,  
safety, and value of your property.

We are certified arborists and horticulturalists  
who have the knowledge and experience to  
properly access and care for your trees.

**Tree Management:** Proper Pruning, Cabling and Bracing,

**Plant Health Care:** Insect and Disease Control,

Root Zone Aeration, & Fertilization

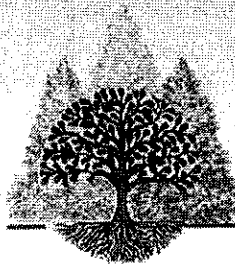
**Construction Preservation:** Consulting, Planning and Caring  
for desired trees and shrubs through the construction process

Don't trust your tree care to just anyone. Invest in a Certified Arborist.

Call Today for more information:

**804-379-4507**

or visit, [www.arborscapesllc.com](http://www.arborscapesllc.com)



**ARBORSCAPES, LLC**

Tree Management • Plant Health Care  
Construction Preservation

# DOG PARK UPDATE

By Jonathan Gilmore

Both red hawk nestlings and some political issues delayed completion of the Northside Dog Park. The final decision was to move the park location from the original site near the community center parking lot to an empty field behind Henderson Middle School.

Access to the park is from Forest Lawn Dr., which joins Old Brook at the YMCA and runs behind Armstrong High School and Henderson Middle School. There are a few softball fields back there, a city parks office, as well as a building housing the police K-9 training unit. The new location will be larger than the one we originally planned. It will still have two sections, one for all dogs, and a separate area for small dogs and puppies. One drawback of the new site is a lack of shade. We plan to plant some trees along the fenced perimeter as well as install a few covered picnic tables to provide some relief during the summer months. We will need to haul

water for the first year until we can run a water line from one of the park buildings to the dog park site. If all goes smoothly, we will still be able to have the dog park officially open this fall. The plan is to begin clearing the new site right away. This means we will be calling up our volunteer construction crews and helpers fairly soon. We will need a crew to install the fencing, spread mulch, and haul and move picnic tables and other equipment.

Please let me know if you have any questions or concerns. If you are interested in volunteering, please contact Jonathan Gilmore at [jgilmore8@gmail.com](mailto:jgilmore8@gmail.com).

Visit The Northside Dog Park at  
[northsidedogpark.com](http://northsidedogpark.com)



## SANTA and PANCAKE

The Battery Park Christian Church will host a free pancake breakfast and free photo with Santa on Saturday, Dec. 11 from 9-11 a.m. at the corner of Brook and Bellevue. Call the church if there are questions—266-3973.

## Turn your radiator into a piece of furniture.

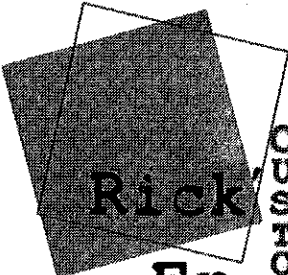
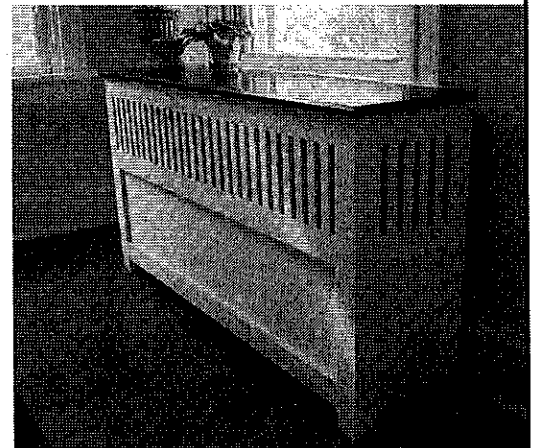
*"The quality craftsmanship, design, speed and price just can't be beat."*

— Sarah, Battery Park

Our affordable radiator covers are custom made for fit and individual style. Give us a call today.

**Richmond**  
RADIATOR COVERS

804.779.2680 | To see more visit: [RichmondRadiatorCovers.com](http://RichmondRadiatorCovers.com)



**Rick's**  
**Frame**  
**+ Gallery**



### Custom Frame + Gallery

near Libbie

5702 Patterson Ave

Richmond VA 23226

Rick Michaels, owner

Phyllis DeMaurizi, owner

Laura Garrett, manager

P 804.288.0001

Mon-Sat 10-6

[rick@rickscustomframeandgallery.com](mailto:rick@rickscustomframeandgallery.com)

## Take a break for the Holidays with respite care

HeartFields respite care offers:

- ◆ 24/7 care and security - even for long holiday weekends
- ◆ Three delicious meals served in our lovely dining room
- ◆ Flexible stays from one week to 30 days
- ◆ Activities that stimulate the mind, body and soul
- ◆ Housekeeping, personal laundry, linen service
- ◆ Transportation to scheduled medical appointments

**HEART FIELDS**  
ASSISTED LIVING  
FIVE STAR SENIOR LIVING  
501 N. Allen Avenue  
804-257-7949

Holidays can cause stress to caregivers caring for seniors at home. In addition to caregiving duties, you now add shopping, home cleaning and decorations, parties and family gatherings to the never ending to-do list. Keep your holiday schedules and make the most of your time. We would be happy to care for your loved one.

Fun activities, holiday parties and open houses, delicious food, friendly social gatherings and wellness programs will be your gift to them!



Visit us at: [www.heartfieldsatrichmond.com](http://www.heartfieldsatrichmond.com)

### GPRA 2010 Dues Coupon

Household member

Other (e.g. church, business, etc.)

Ginter Park Residents Association • P.O. Box 25374 • Richmond, VA 23260

Name \_\_\_\_\_

Address \_\_\_\_\_

Zip Code \_\_\_\_\_ Phone \_\_\_\_\_

Email Address \_\_\_\_\_

Check# \_\_\_\_\_ Date \_\_\_\_\_

Dues for the 2010 calendar year are \$25 per household. Checks should be written to the Ginter Park Residents Association and mailed with this form to the above address. Thank you very much.

## Place your classified ad here!

\$15.00 for maximum of 25 words. Clip the coupon below and send with your completed ad and check or money order. GPRA reserves the right to edit for space constraints. No personal ads.

Send To: Nancy Hall c/o Ginter Park Residents Association  
P.O. Box 25374 Richmond, VA 23260  
winterbird121@yahoo.com (540) 969.9614

Name \_\_\_\_\_

Address \_\_\_\_\_

Phone \_\_\_\_\_ Email \_\_\_\_\_

\_\_\_\_\_

\_\_\_\_\_

\_\_\_\_\_

\_\_\_\_\_

## CLASSIFIEDS

**Basket Weaving Class taught in my Ginter Park home.** Tuesdays, 11/16-12/14 6:30-9:00PM, \$125 plus material fee.  
Instructor: Jacky Lambert. 266-7868 or jacky@lamsam.com

**Ginter Park Maintenance Services**  
Repairing Northside Homes Since 1987.  
Your one stop handy man service!  
Old houses are my specialty;  
Call Larry 523-2952

**ReFinery: where beauty becomes again!**  
New/like-new women's apparel & accessories  
1221 Bellevue Avenue 804-266-8424  
www.refineryinc.com Tuesdays - Saturdays

**W.R. STANSBURY & BRO. -749-3501.**  
Painting and decorating. Richmond's oldest,  
since 1908. Fifth generation.

## Diversity Thrift

Richmond's Progressive Bargain Store  
**We pick up furniture! Call 353-8890.**

Your neighbor on the Northside at 1407 Sherwood Avenue  
Hours and directions at DiversityThrift.org

Watch for our new location: DT2 opening soon in the Fan.

## Newsletter in Peril

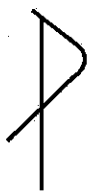
Unfortunately, Nancy Hall, who has done a superb job as advertising editor, must resign due to work commitments.

The following is the job description:

- 1) receive ad copy and inquiries about placing ads
- 2) submit ads to layout editor by published due date
- 3) provide mailing list of advertisers to Membership Chair
- 4) communicate and resolve any issues with ad copy
- 5) invoice ads and deliver payments to Treasurer
- 6) solicit annual renewals and identify new advertisers

The job does NOT require beating the bushes for new advertisers. They will contact you. You just need to be in e-mail or phone contact.

This is a crucial role in our organization. The newsletter cannot be published without advertising.



## SAINT THOMAS' CHURCH

St. Thomas Episcopal Church  
3602 Hawthorne Avenue (corner of Hawthorne and Walton Avenues)  
Phone: 321-9548 | www.stthomasrichmond.org

**Worship Services :** Every Sunday at 9:00 a.m. and 11:00 a.m.

**Ministers:** The Reverend Susan N. Eaves, Rector  
The Reverend Susan Daughtry, Asst. Rector  
Mrs. June Hardy Dorsey, Lay Associate for Ministry  
Dr. David McCormick, Director of Music

St. Thomas' Day School offers a weekday morning program for children, ages 2 through pre-kindergarten, September through May  
Director: Mrs. Kelly Kane, phone 329-1117



Ginter Park Residents Association  
P.O. Box 25374  
Richmond, Virginia 23260

NON-PROFIT ORG.  
U.S. Postage  
**PAID**  
RICHMOND, VA  
PERMIT NUMBER 3022

*Postmaster: Please deliver to addressee above or current resident.*



Nine-foot ceilings  
add a touch of class.

**So does a master  
bedroom suite.**

*We bring new life to old homes.*

Cabinetry &  
Construction  
I N C O R P O R A T E D

WWW.CABINETY-CONSTRUCTION.COM | 804.497.3491 | ROBRIGHT@CABINETY-CONSTRUCTION.COM